

sandy high school

In November 2008 the Oregon Trail School District passed a Capital Bond, the first bond passed within the district in more than thirty years. The primary component of the bond was a new replacement high school that would more than double the nearly ninety year old high school's square footage. The new building would exemplify the school district's commitment to quality education and be a center of pride for all the communities within the 424 square mile district, an area stretching from Boring to Government Camp on Mount Hood.

DULL OLSON WEEKES architects inc
project team

john weekes
keith johnson
jerry l waters
eric buschert
nancy rad
mathew braun
julie condon
ki kim
trent jorgensen
laura roark
debbie abraham
christopher dorin
tammy hite
christian sinai
susan wurdeman
thane miller
peter lo
jessica molinar





sandy



The city of Sandy is located at the midway point between Portland, Oregon and the historic Timberline Lodge of Mount Hood. At an elevation of nine hundred feet in the foothills of the Cascade Range and within the Mount Hood Recreation Area, the town of eight thousand prides itself as the Gateway to Mount Hood. Incorporated as a city in 1913, it is the commercial center for a rural area of more than twenty thousand people. Within the District's boundaries a number of majestic natural sites can be experienced, in addition to Mount Hood, Oregon's highest peak at 11,240 feet, there exists Bull Run Reservoir, Ramona and Zig Zag falls, the Sandy River, for which the city was named, and numerous horticultural nurseries.

sandy style



The City of Sandy zoning code requires new construction to conform to the Sandy Style, a local design standard developed to enhance and protect the community image. The Sandy Style is meant to celebrate Sandy as the Gateway to Mount Hood by adapting elements of Cascadian architecture popular between 1915 and 1940. The use of heavy timber and stone emphasized a structure of substantial strength often coupled with pitched roofs containing tiers of shed dormers. Asymmetrical massing composition was standard with varied exterior textures and unpainted board siding. Commonly cited precedents demonstrating exemplary Cascadian architecture are Old Faithful Inn, Crater Lake Lodge, Bryce Canyon Lodge and, of course, Timberline Lodge.



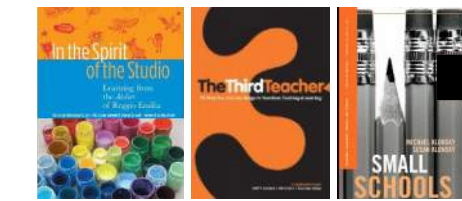


principles & pedagogy

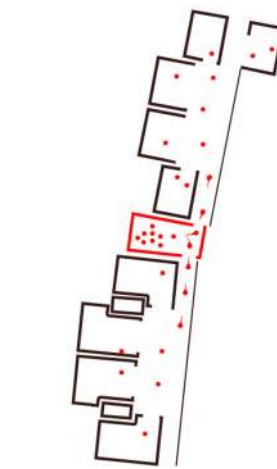
The District's five strategic plan goals include; a comprehensive education system, high levels of achievement for all students, highly qualified staff, safe and supportive learning environments, and communication and collaboration between staff, students, parents and community. In addition to these goals the new high school was designed to meet the guiding principles of community pride, learning today and tomorrow, provide a variety of spaces that are agile and flexible, be sustainable and efficient, and incorporate technology.

Sandy High School is designed to accommodate a variety of pedagogical models. The ability to arrange and re-arrange the learning environment is central to this theme. Learning going forward will change. A spacial arrangement that is agile, allowing teachers to respond to changing learning modalities, student needs and evolving educational programs has been considered. Variety in educational program opportunities has been incorporated. While in typical high schools learning is often isolated and hidden, at Sandy High School the art and wonder of learning is on display everywhere and encouraged.

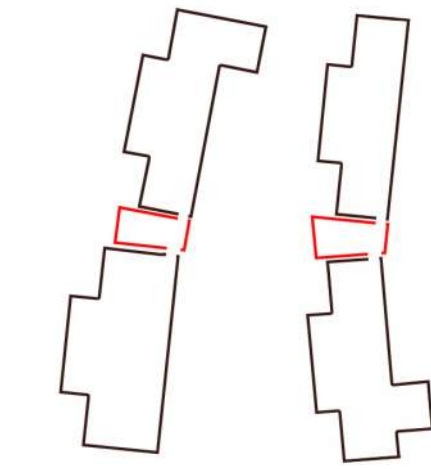
Further the facility considers the interior and exterior as learning places. Learning spaces are infused with the full array of teaching/learning tools. Typical interior space, usually underutilized, has been reconfigured to accommodate extended learning opportunities. Transparency and visibility is prominent. The celebration of learning extends to the exterior where the connection between inside and outside has been enhanced. The grounds surrounding the building are available for a variety of learning activities. Both building and grounds are a teaching tool.



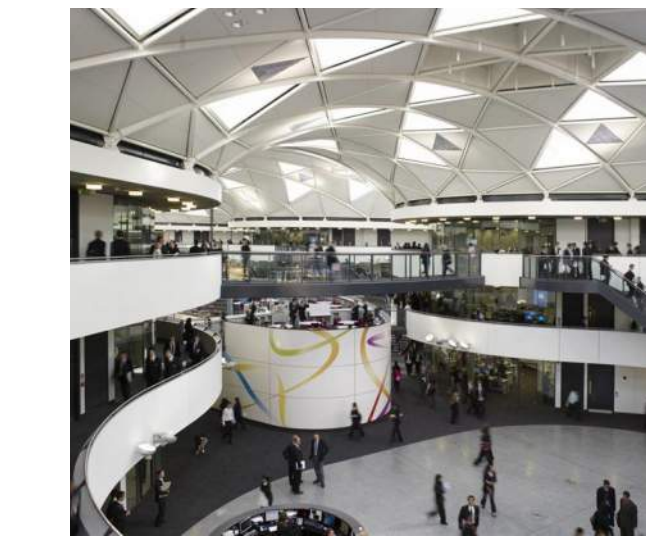
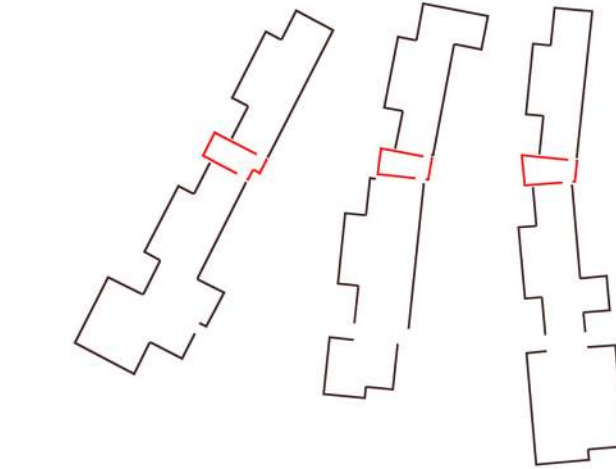
professional learning communities
 data teams
 cadres
 learning cafes
 making learning visible



small schools
 learning tracts



academies
 Reggio studios





site/
scale

The 81.7 acre site north of U.S. Highway 26, formerly the Barlow Road segment of the Oregon Trail, is home to the high school's athletic department with existing football stadium, track, baseball and softball fields. Much of the western portion of the site remains a natural wooded area with a network of trails maintained and incorporated into the curriculum of the science department. This presented a significant resource and important outdoor learning opportunity that became a defining characteristic included in the design.

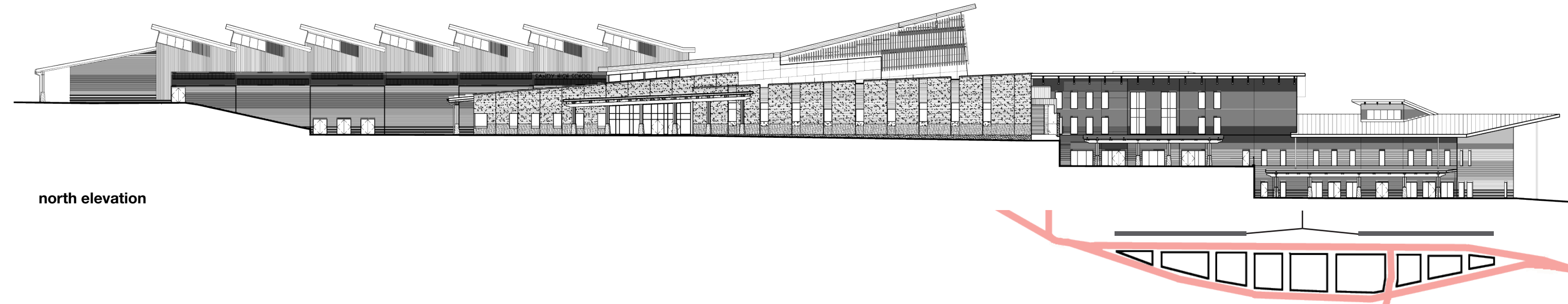
site topography



At 310,000 square feet, the new high school is the largest building in the community and by a large measure the largest building required to implement the young and barely tested Sandy Style design standard. Coupled with site constraints and a site topography that slopes more than eighty feet east to west, significant factors began to shape the design. The building's aggregate perimeter elevation would more than equal the entire streetscape of the downtown historic center, raising scale and structural conflicts with a code that preferred small cottages and wood framed buildings.

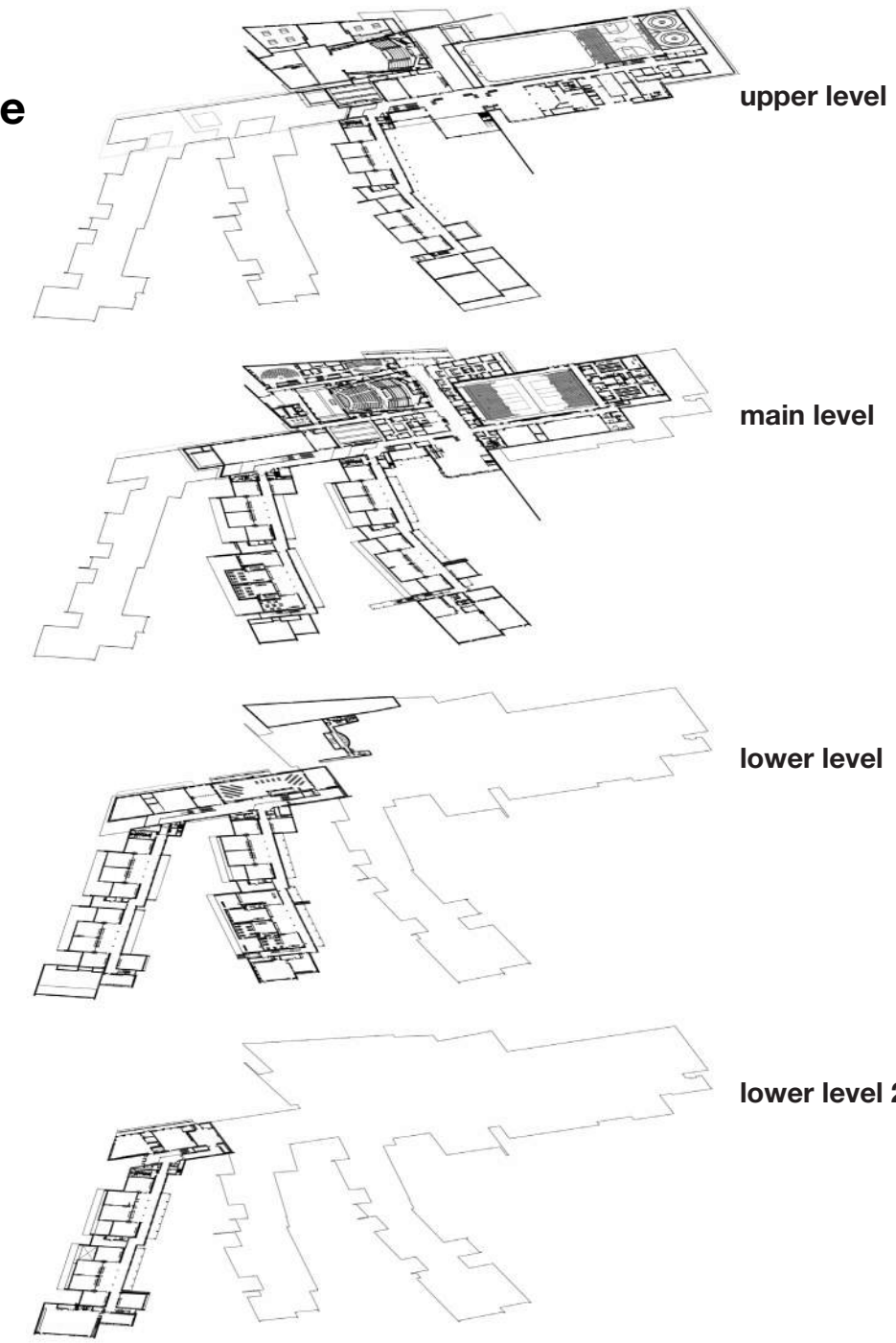


historical downtown sandy



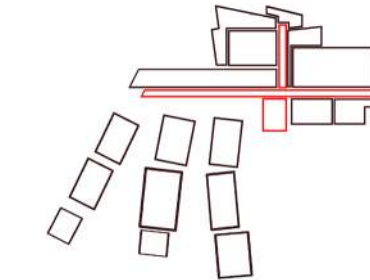


scheme



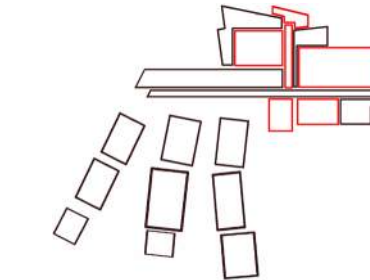
town plan

The basic organization of the plan is the classic Roman town plan of two primary axes at right angles to each other. At the intersection of the two is the public square, the school commons.



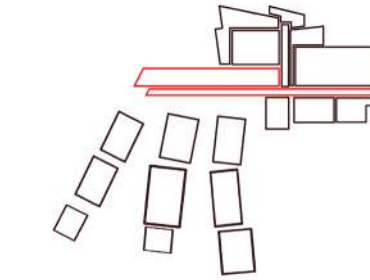
civic center

Introduced by a celebrated entrance, a boulevard organizes and presents the civic center comprised of a theatre, gymnasium, and multi-level commons.



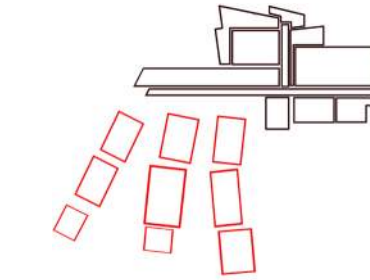
main street

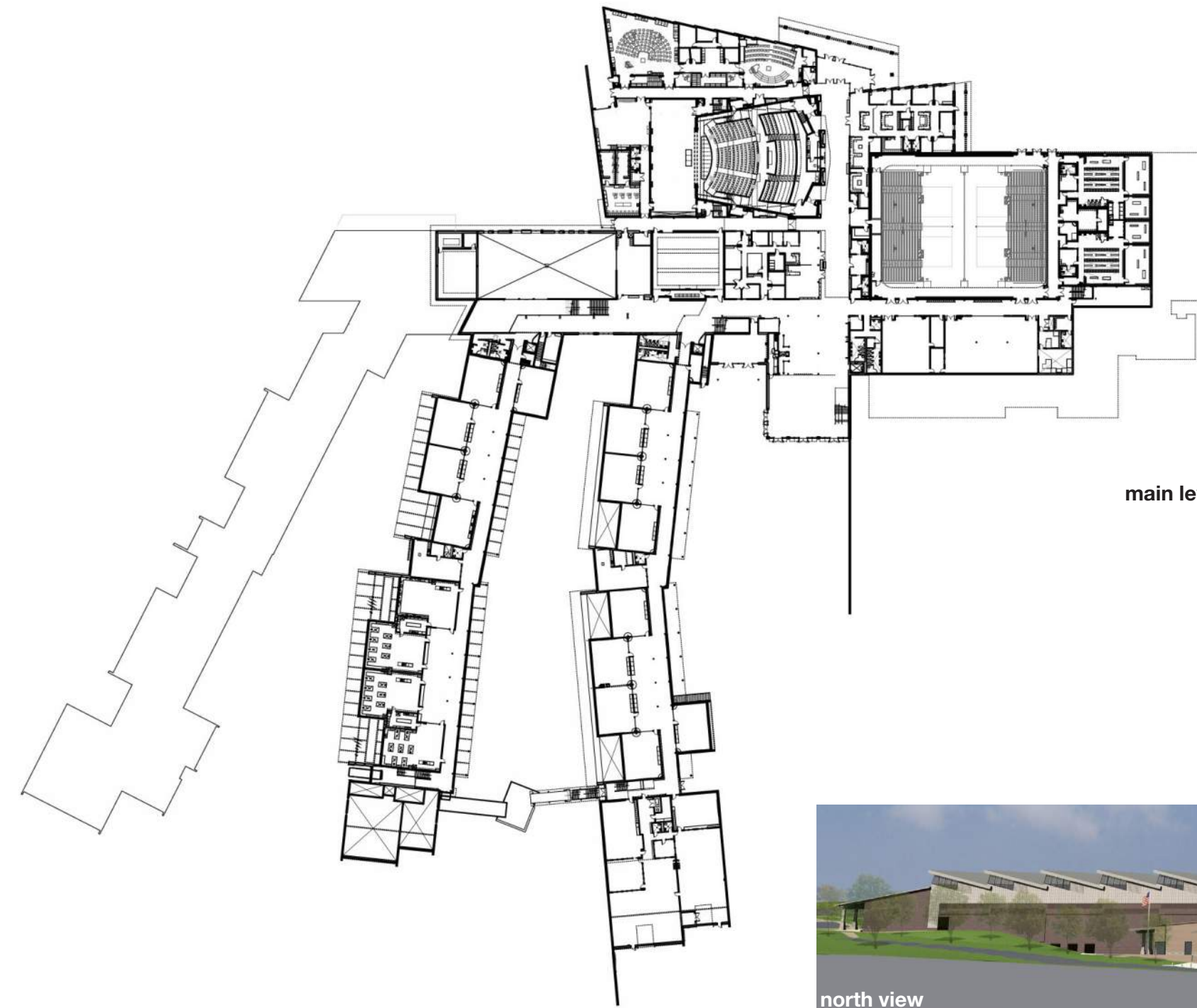
The secondary artery, main street, connects all the daily functions of locker and exercise rooms, commons, library, and art. This street also provides the vertical link, traversing the topography with multiple levels that facilitate the nestling of the cabins into the hillside.



cabins

The cabins are essentially groups of classrooms gathered around a shared extended learning area, terraced into the hillside, providing a tranquil setting within nature.





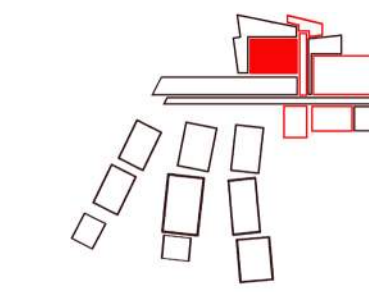
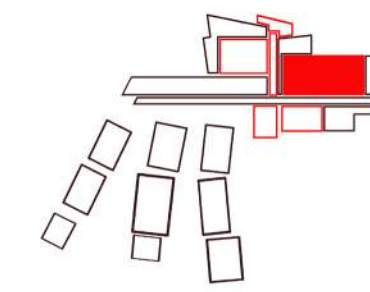
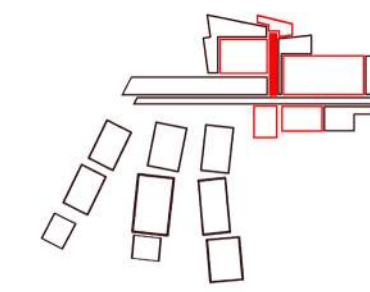
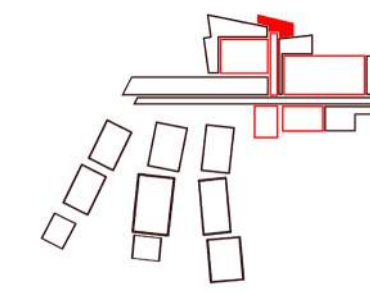
main level



north view

The school's comprehensive program includes performing arts, athletics, fine art, media, the sciences and an extensive career technical education facility. Incorporated within the design are numerous sustainable features and technology is integrated throughout the building to allow seamless learning opportunities across disciplines and space.

scenes



MAIN ENTRY



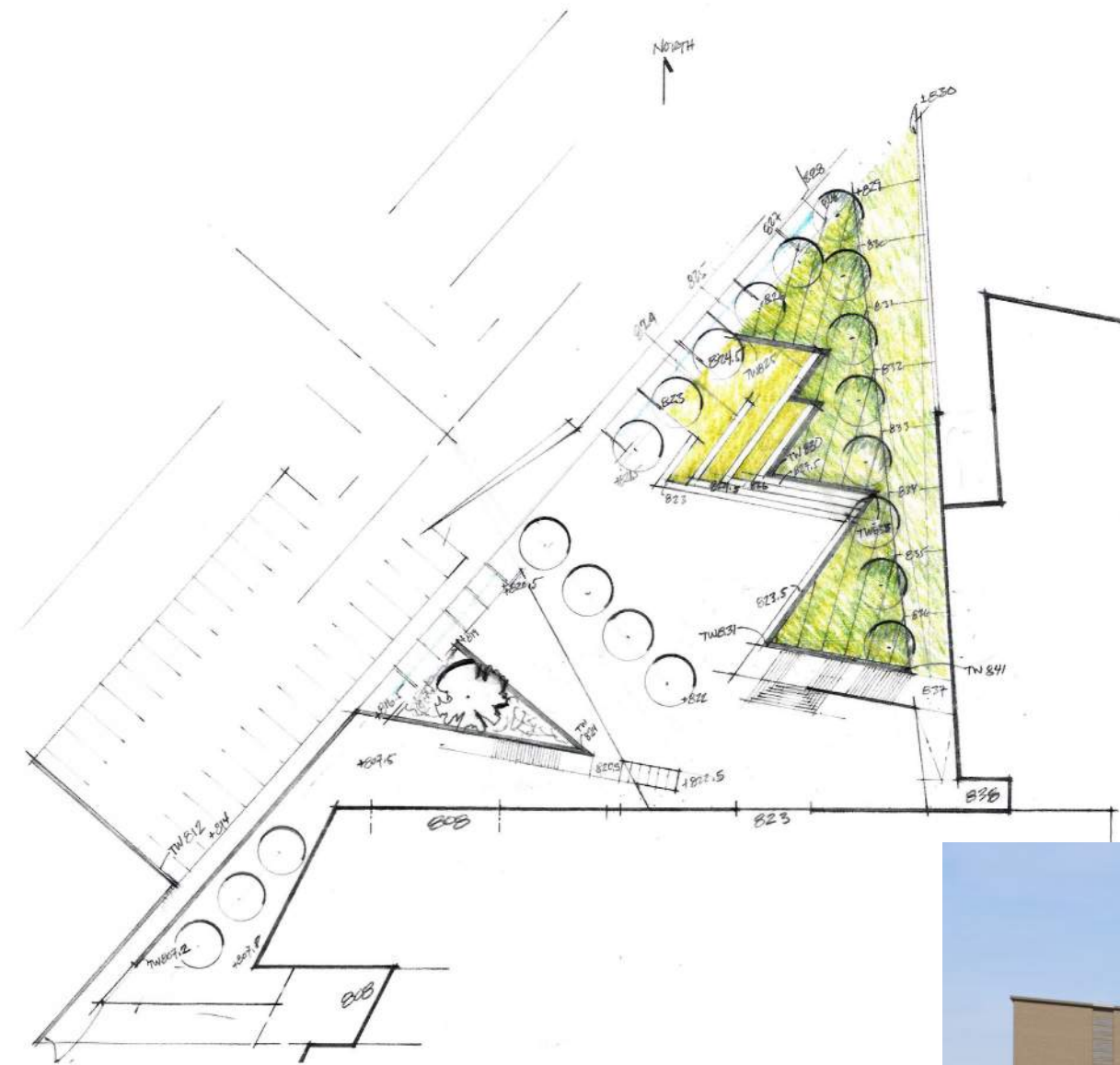
BOULEVARDE



GYMNASIUM



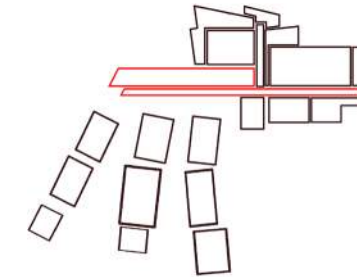
THEATRE



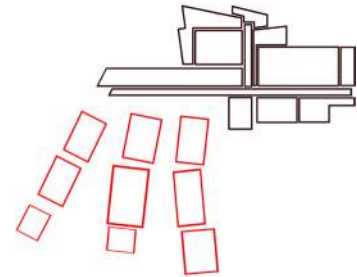
The required terracing of the building, due to the natural site topography, presented many situations conducive to program specific plazas. The upper and lower commons both have south facing hardscape with views to the preserved wooded area. The northwest plaza can be accessed directly from the library or by a grand stair from the performing arts area. The stair and many seat walls were designed to be in the afternoon sun for reading or impromptu performances of drama and music.



northwest plaza view

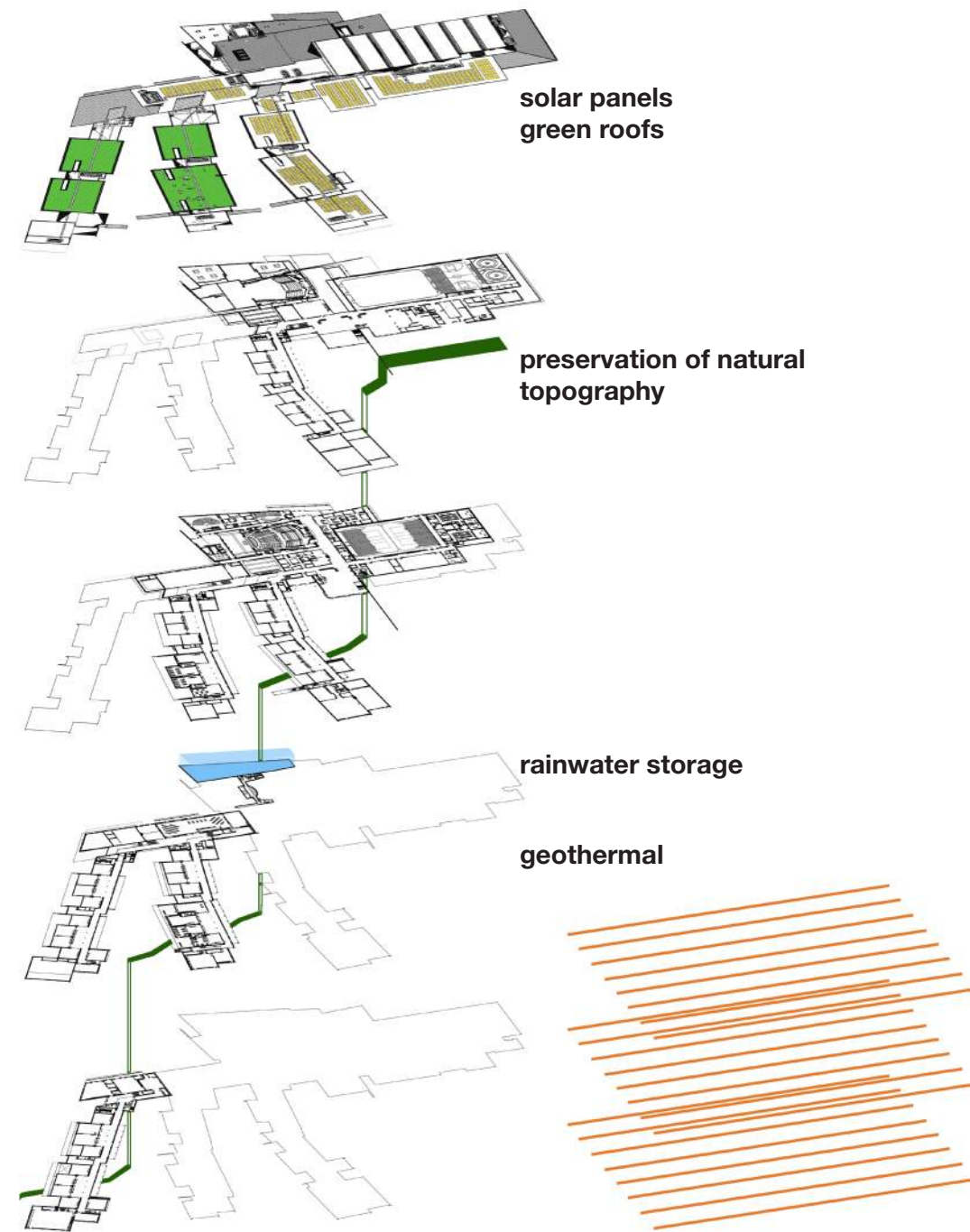


main street



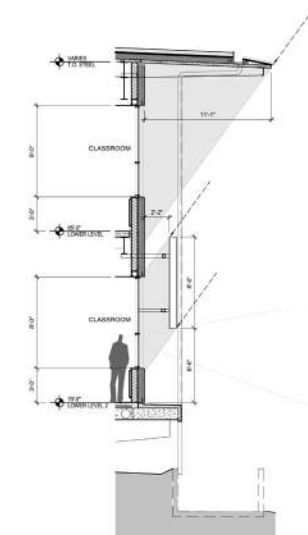
extended learning area



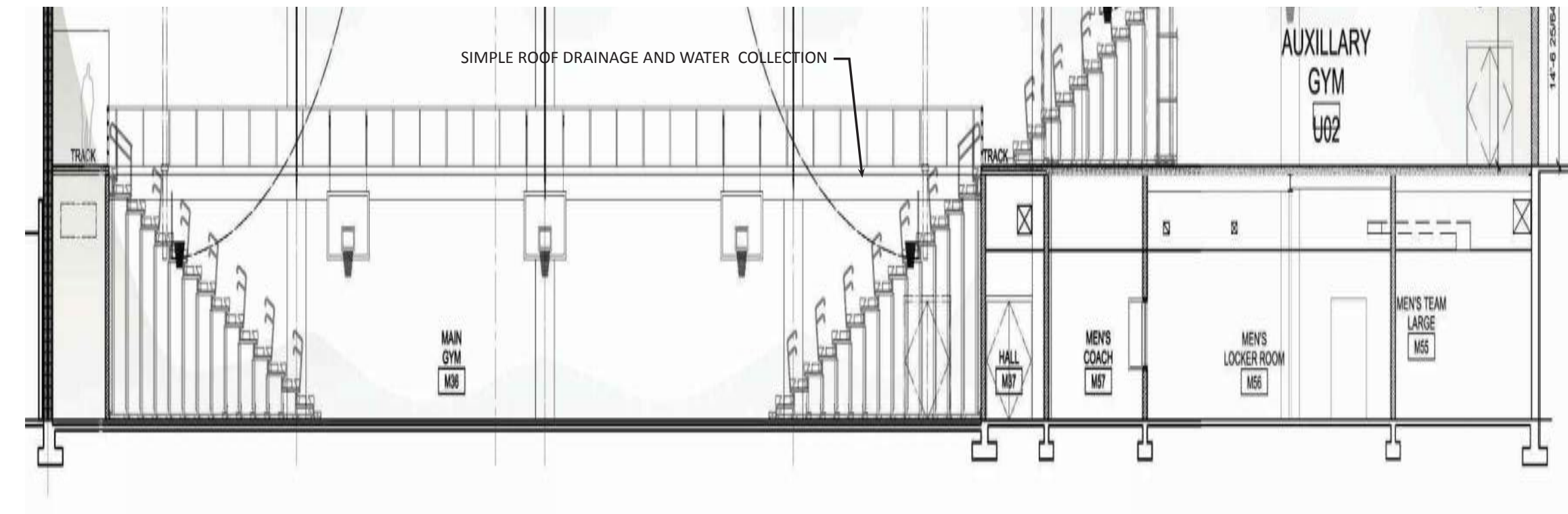
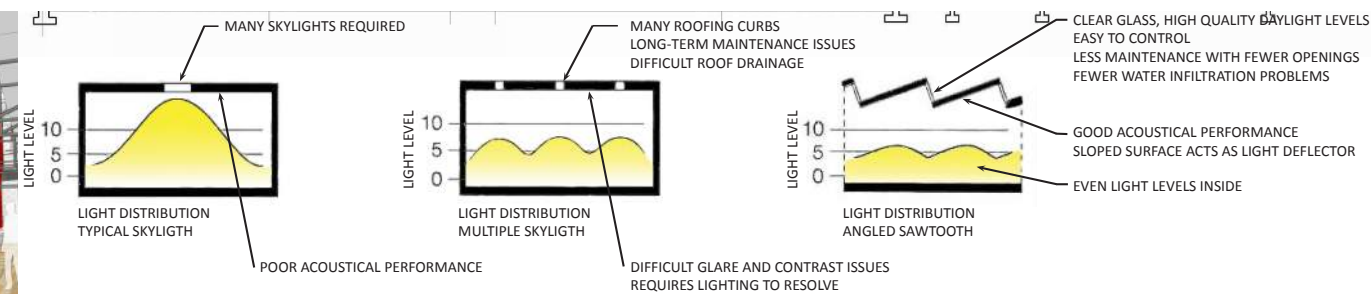


sustainability features

The school district established a lofty goal toward environmental stewardship and integrated many features into the design to confirm their commitment. A 300kw photovoltaic solar array is paired with a solar hot water pre-heat system. Green roofs are used to reduce storm water treatment along with raised building areas. A 500,000 gallon rainwater storage tank will provide the building with non-potable water and the mechanical system utilizes a large geothermal loop beneath the ball fields. Displacement ventilation is used throughout the classrooms to reduce noise and provide a healthier air quality. The walls and roof are super insulated to reduce energy consumption along with natural light being featured in nearly every space including single loaded corridors with views into the natural setting. With natural daylight comes heat control and many different strategies were used including roof overhangs and both horizontal and vertical exterior sunshades. These are forward thinking ideas that help secure the useful future of a community's long term investment.

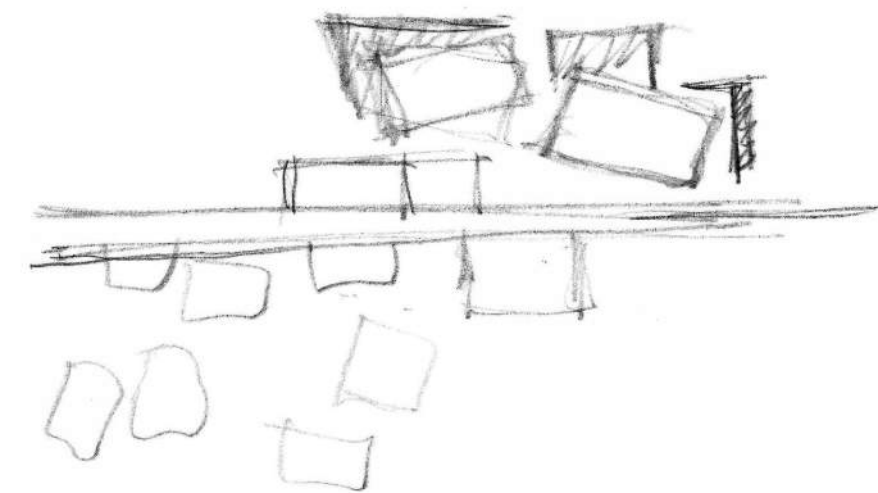


natural daylight

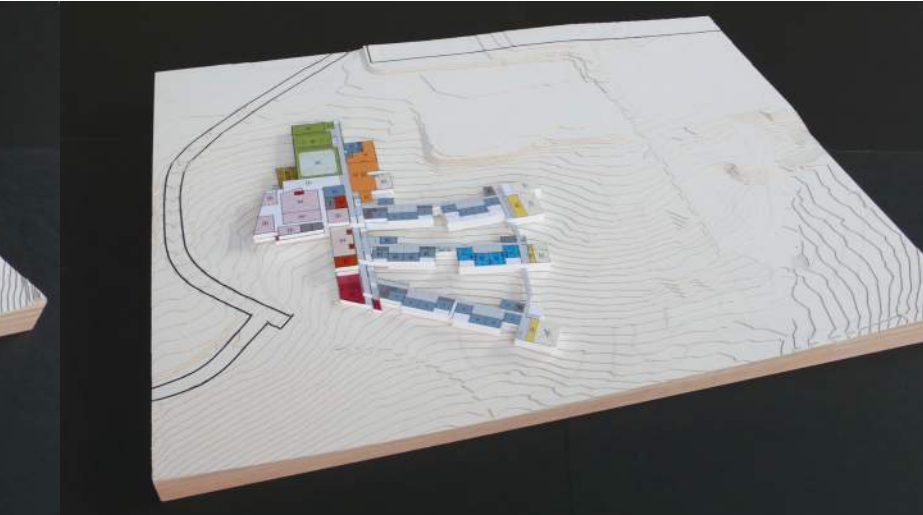
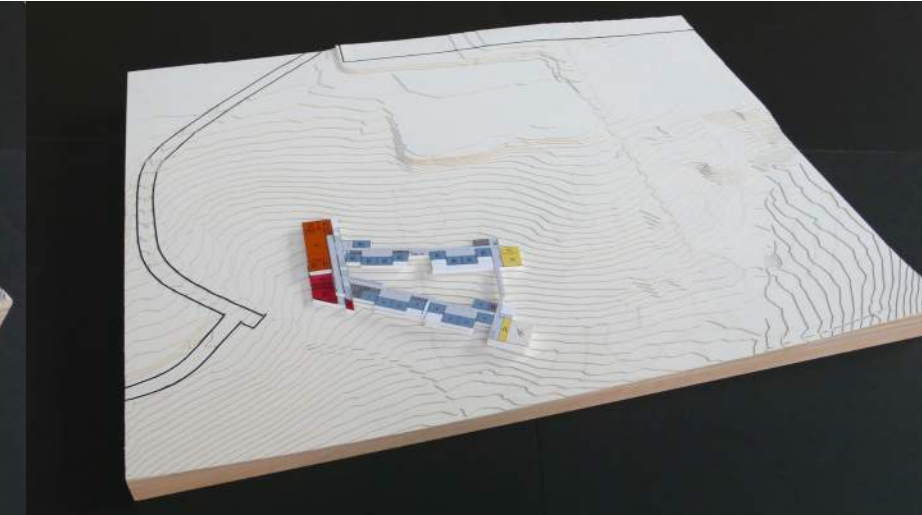
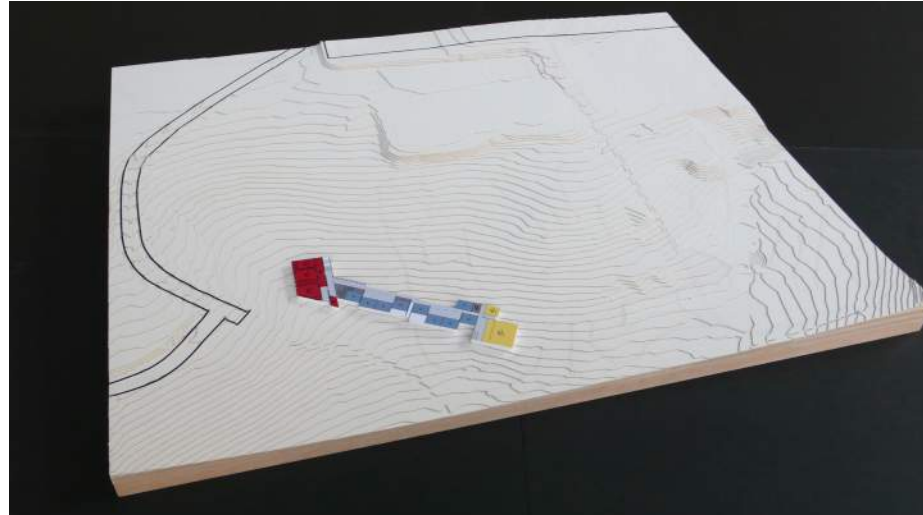
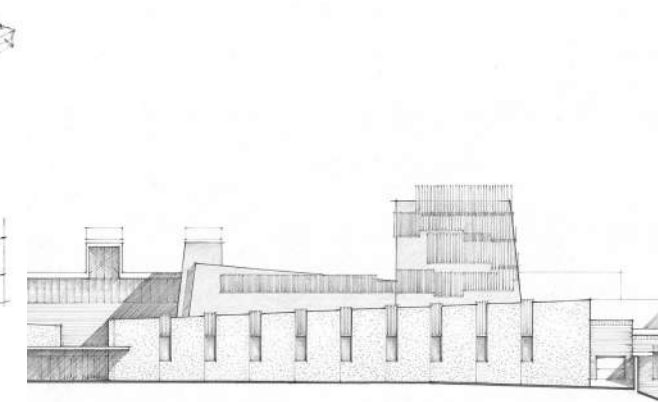
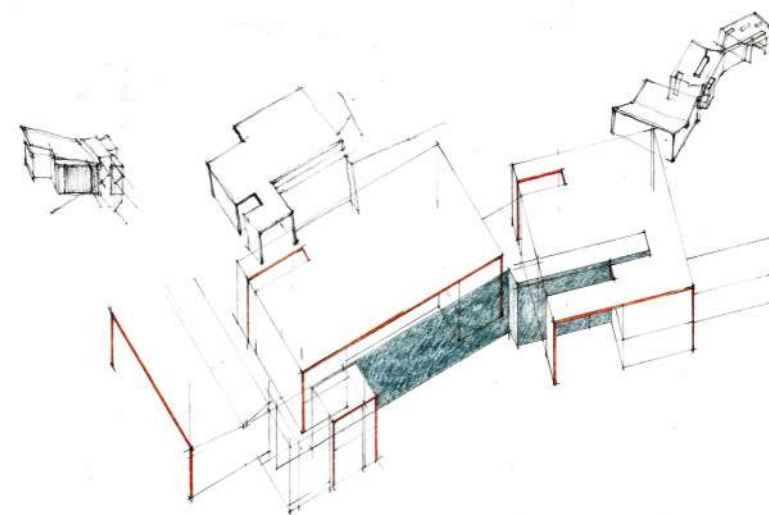


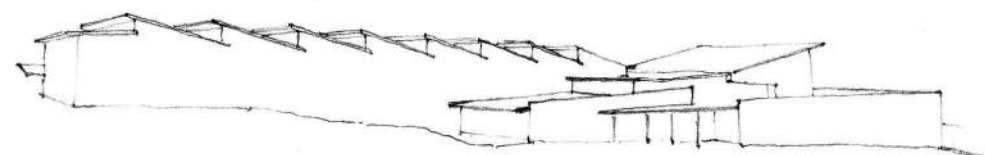
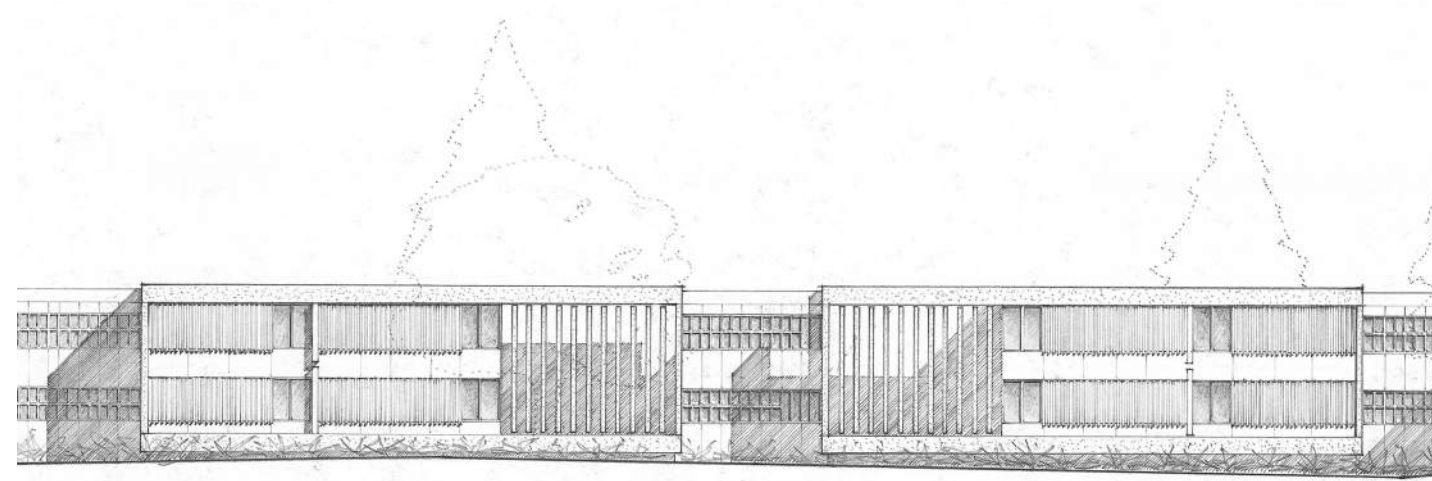
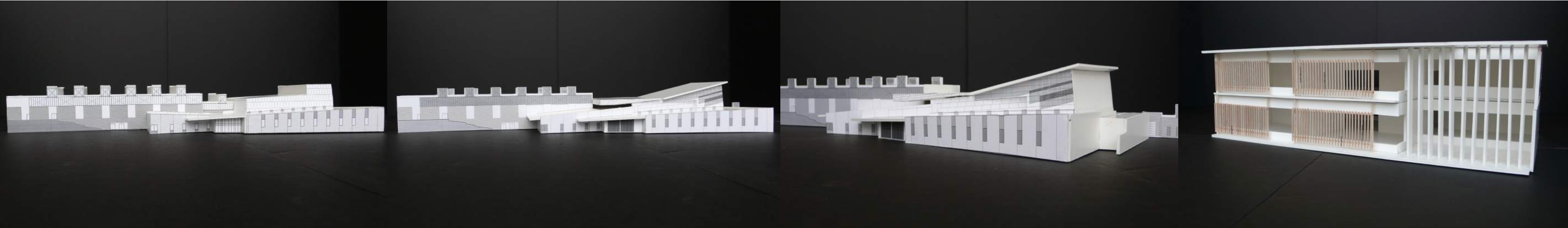
design timeline

concept
spring 2009

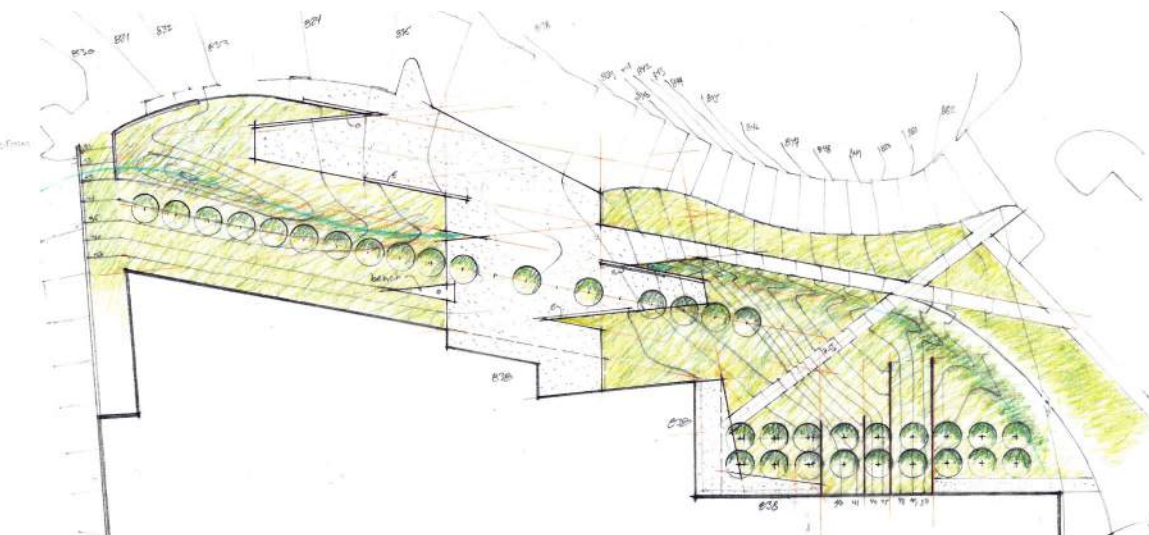
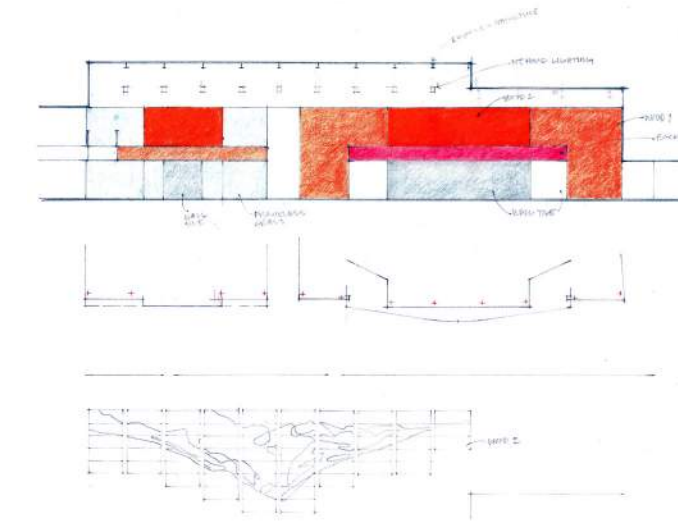
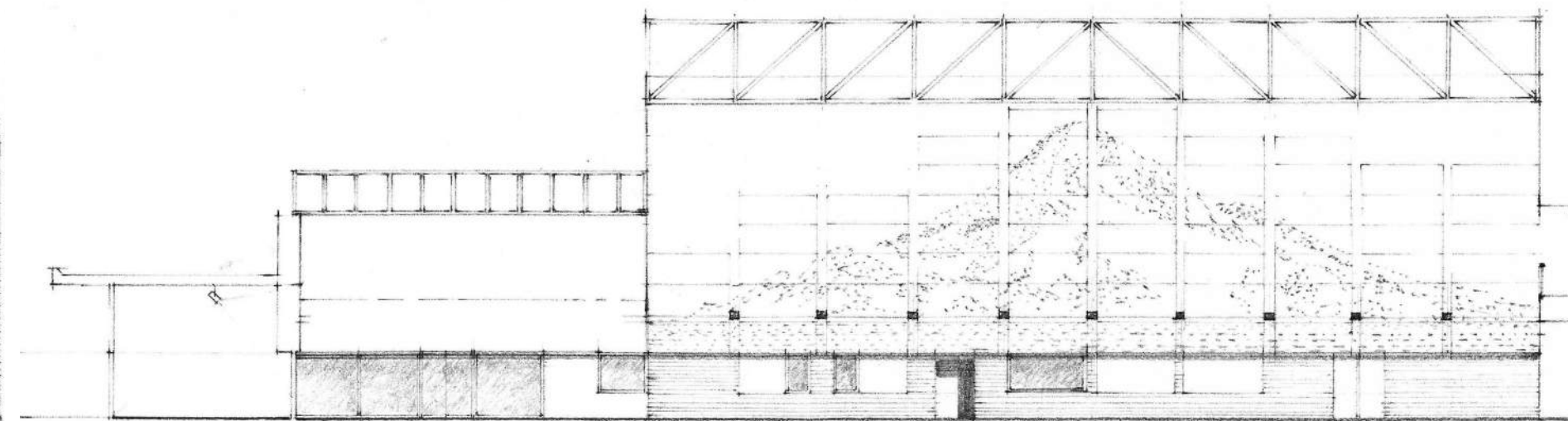


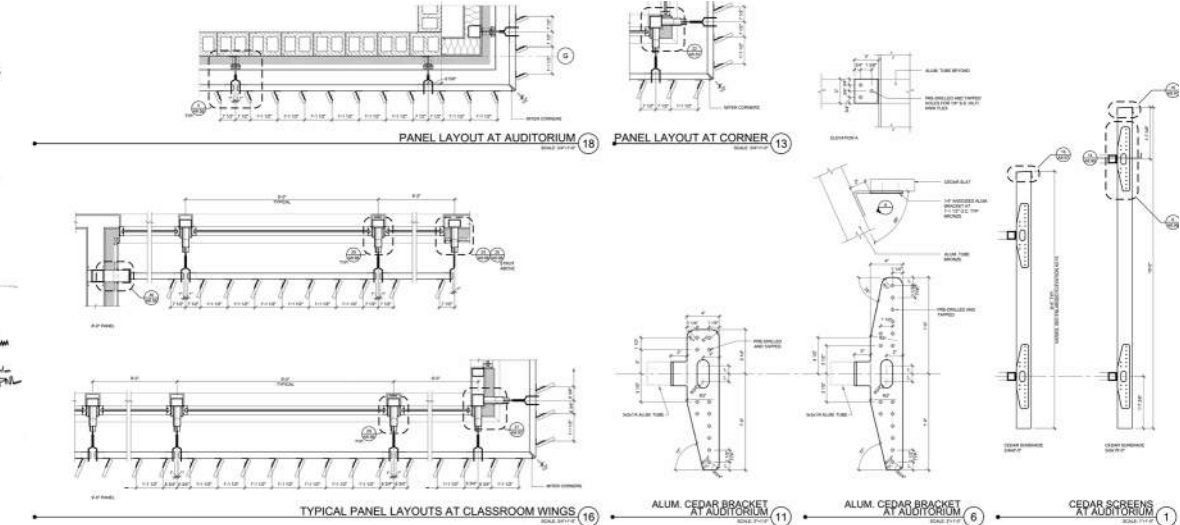
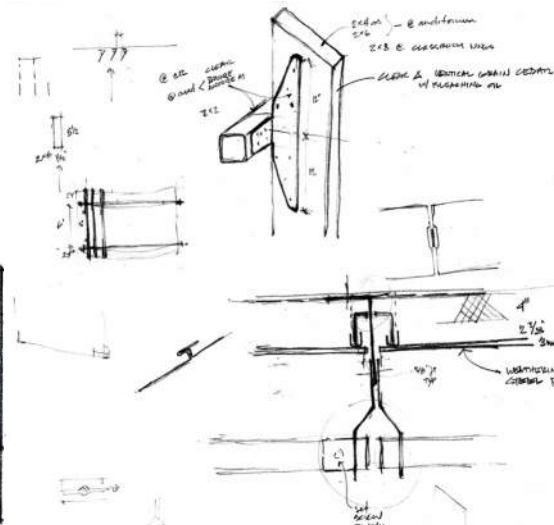
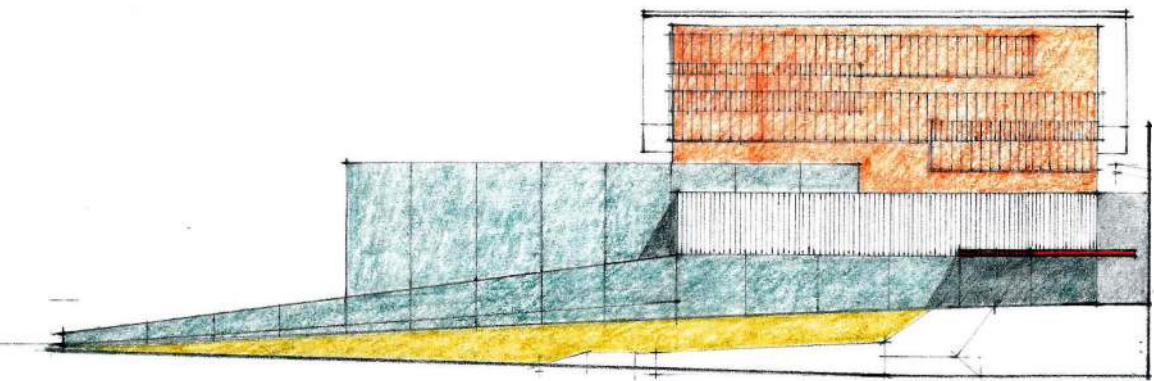
schematic
summer 2009





Design Development
winter 2009-10





detail development
summer 2010



high school students get involved-
intern for summer of model building

our EAST METRO neighbors

The Oregonian

SATURDAY, JULY 3, 2010

New Sandy High to break ground

The City Council denies 9 appeals to the school's building permit but adds some conditions

By QUINCY SMITH

SPECIAL TO THE OREGONIAN

SANDY — The Oregon Trail School District will break ground for its new, \$110 million Sandy High School on Wednesday evening after the City Council denied nine appeals to a permit that governs its design, construction and land use.

The council took 2½ hours Monday night to decide the appeals. It heard no testimony — 4½ hours of that came a week earlier — but discussed and voted on parking, roof lines, maintenance roads, sports field lights and five other issues. While denying the appeals, it added conditions to three areas of the permit to clarify concerns.

After the vote, Mayor Linda Malone tried to reassure the audience that despite the contentious appeal, work on clearing the 83-acre site and other construction planning had continued “and the democratic process has worked in land use as it is supposed to.”

“It’s been an interesting process to me,” said Malone, adding that she felt the city had cooperated with the school district in the permit and appeal process. “At every step of the way we’ve tried to be a good partner.”

The city’s conditional use permit could still be appealed to the state Land Use Board of Appeals. One of the three appellants, Kathleen Walker, declined to comment after the vote other than to say she had “no idea” if she would take her case to the state.

School district voters approved a

Please see **SCHOOL**, Page E2

Sandy High School

What: Official groundbreaking for new high school

When: 6 p.m., Wednesday

Where: New high school site on Bell Street

Also: Hoffman Construction will host an information meeting at 7 p.m. Wednesday in Gym A at Sandy High School for subcontractors interested in bidding work and for individuals seeking job opportunities.

construction timeline

summer 2010



autumn 2010



winter 2010-11





SPRING 2011



SUMMER
20

AUTUMN
20





winter 20 2



spring 20 2









summer 2012





results





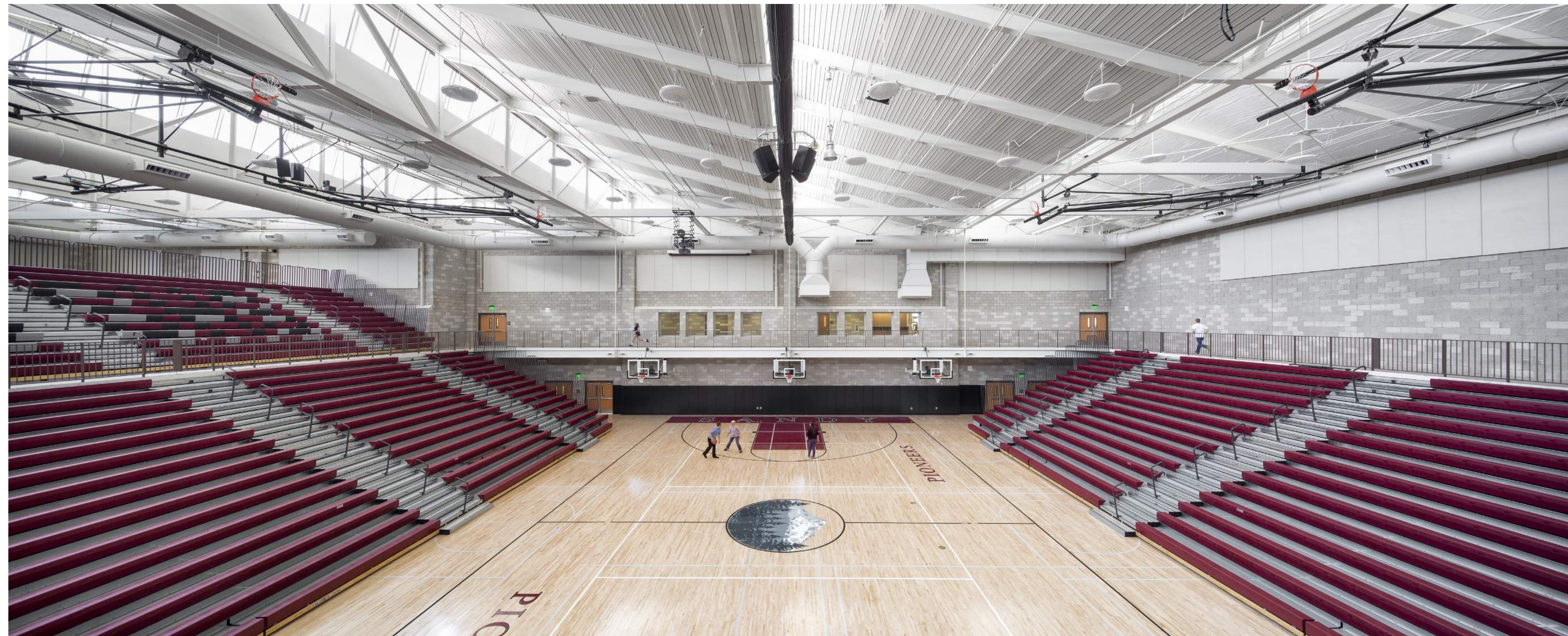




























learning by design
-2013 citation of excellence

architectural record jan 2013



